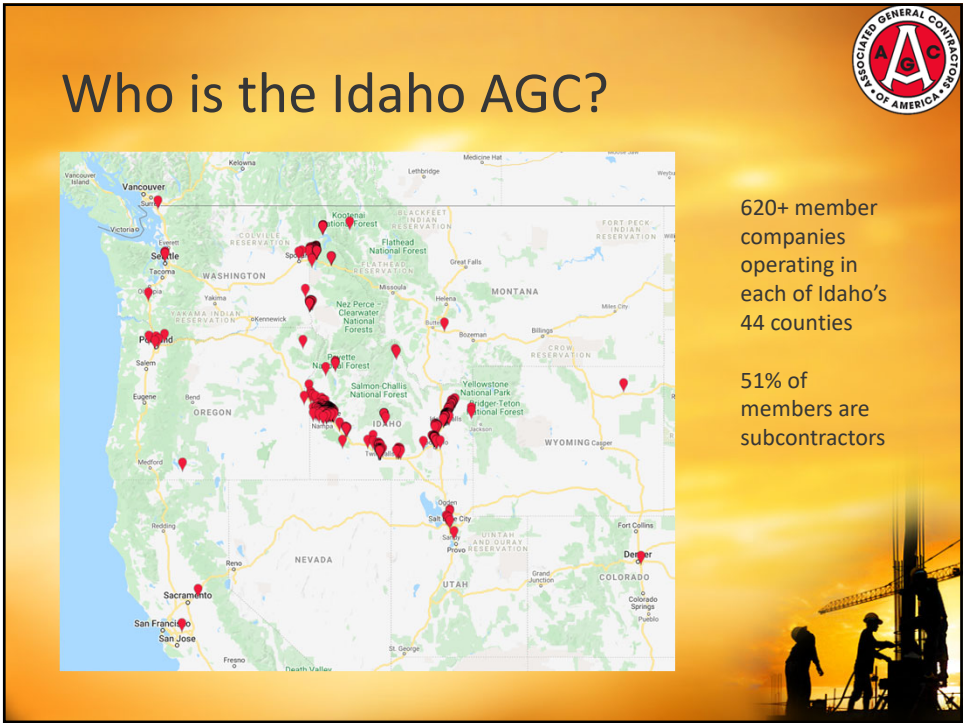




1



2

AGC Welcomes the Entire Construction Industry



General Contractors

Suppliers

Specialty Contractors

Service Providers

AGC is the only organization that welcomes all construction industry participations – large & small, horizontal & vertical, union & open shop, family owned & corporate



3

All Sectors Are Interconnected



Ware-house

Office

Public Spaces

Multi Family

Schools

Farm Storage

Retail

Single Family

Airports

Manu-facturing

Utilities

Health Care

Road Work



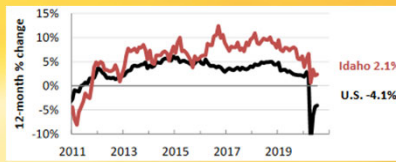
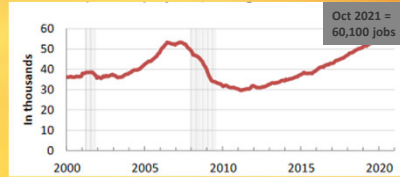
4

WH1



Idaho Employment

- 60,100 Idahoans work in construction
- Employment has now surpassed pre-recession record levels
- Employment up over 5,000 jobs since last year

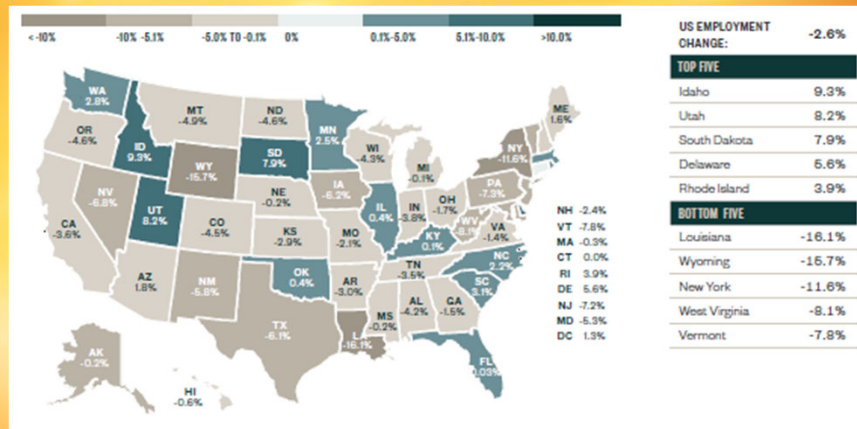


Data: AGC of America, Sep & Dec 2020 and Oct 2021



5

Employment Growth



Source: Moss Adams 2021 Construction Salary Report – Sept 2021



6



National V. Idaho Trends


NATIONAL FIGURES STARTING TO IMPROVE

- Employment nationwide DOWN 2.6%
- Only 14 states experienced growth in employment in 2021

IDAHO BUCKS NATIONAL TRENDS (AGAIN)

- Construction employment in Idaho grow by 9.3% in 2021
- Ranked 1st nationally

Data: AGC of America, Dec 2020 & June & Oct 2022



7



“Good Paying Jobs”

- Construction jobs in Idaho pay well.
- Most construction occupations in Idaho pay more than the statewide median.
- 99% of construction workers have employer provided health insurance


INSURANCE BENEFITS

	ANNUAL REVENUE	< \$20K	\$20K-\$30K	\$30K-\$40K	\$40K-\$50K	> \$50K	ALL
Companies that offer							
HEALTH INSURANCE							
Management	97%	100%	100%	100%	100%	100%	99%
Nonmanagement	98%	100%	98%	98%	100%	100%	99%
Companies that offer							
DENTAL INSURANCE							
Management	77%	97%	93%	100%	100%	100%	89%
Nonmanagement	79%	97%	93%	95%	100%	100%	89%
Companies that offer							
VISION INSURANCE							
Management	70%	83%	80%	100%	100%	100%	82%
Nonmanagement	70%	83%	82%	83%	100%	100%	80%
Companies that offer							
DISABILITY INSURANCE							
Management	40%	77%	93%	87%	100%	100%	68%
Nonmanagement	38%	63%	87%	74%	100%	100%	61%
PORTION PAID BY COMPANY							
Management	98%	98%	100%	100%	100%	100%	98%
Nonmanagement	97%	92%	95%	93%	96%	96%	95%

Source: Moss Adams 2021 Construction Salary Report – Sept 2021



8



LABORER

JOURNEYMAN / CRAFTSMAN

Salary by REGION

REGION	COUNT	FIRST QUARTILE	MEDIAN	THIRD QUARTILE	AVERAGE
Western Washington					
Eastern Washington					
Oregon					
Northern/Central California					
Greater Bay Area					
Southern California					
Other Participating Locations					
ALL FIRMS					

FOREMAN


					\$89,708
					\$61,513
					\$74,670
					\$95,743
					\$95,447
					\$75,815

SUPERINTENDENT

REGION	COUNT	FIRST QUARTILE	MEDIAN	THIRD QUARTILE	AVERAGE
Western Washington	78	\$100,000	\$120,067	\$135,000	\$121,191
Eastern Washington, Idaho, Montana	24	\$82,275	\$87,816	\$101,260	\$93,930
Oregon	25	\$90,000	\$112,931	\$126,920	\$108,650
Northern/Central California	10	\$107,272	\$121,000	\$132,138	\$121,983
Greater Bay Area (CA)	15	\$121,797	\$131,000	\$148,000	\$134,688
Southern California	29	\$100,100	\$115,000	\$134,000	\$115,440
Other Participating Locations	17	\$87,000	\$100,000	\$125,000	\$106,558
ALL FIRMS	198	\$95,000	\$115,000	\$131,296	\$115,265


Source: *Moss Adams 2021 Construction Salary Report - Sept 2021*

9

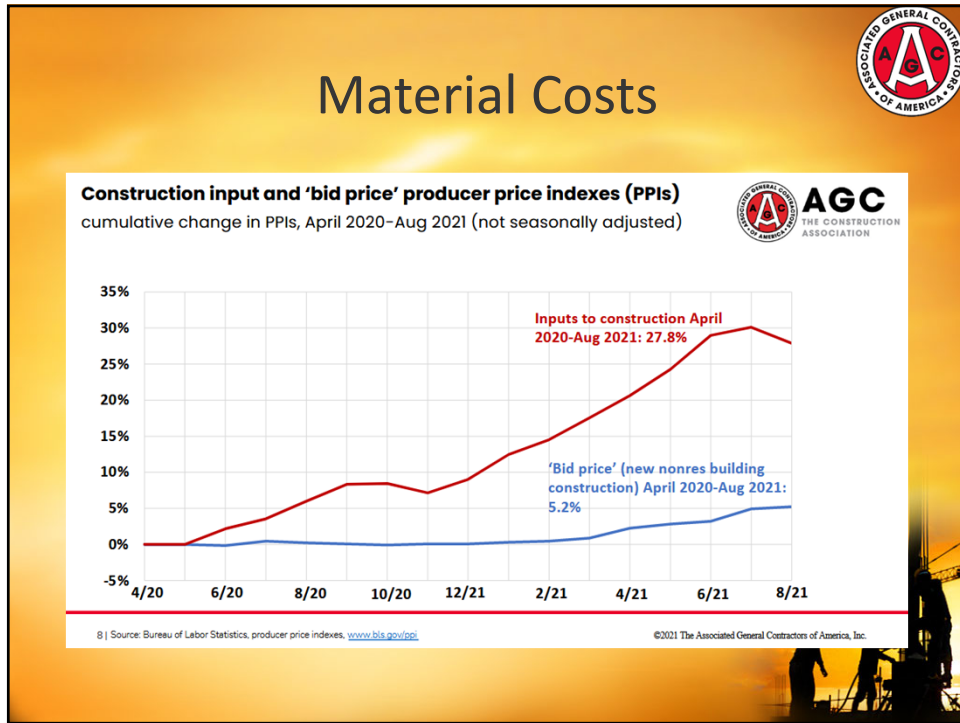


Challenges

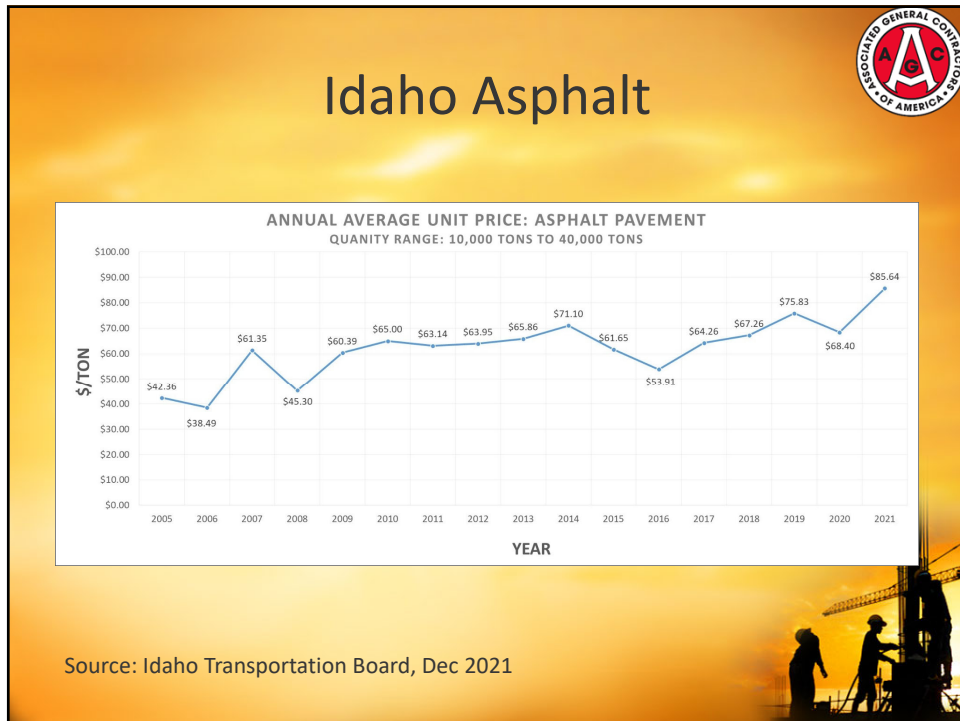
- 83% of Idaho construction firms report having unfilled hourly craft positions
- Publicly funded projects continue to lag
- Interest rate uncertainty
- Cost of inputs continues to rise



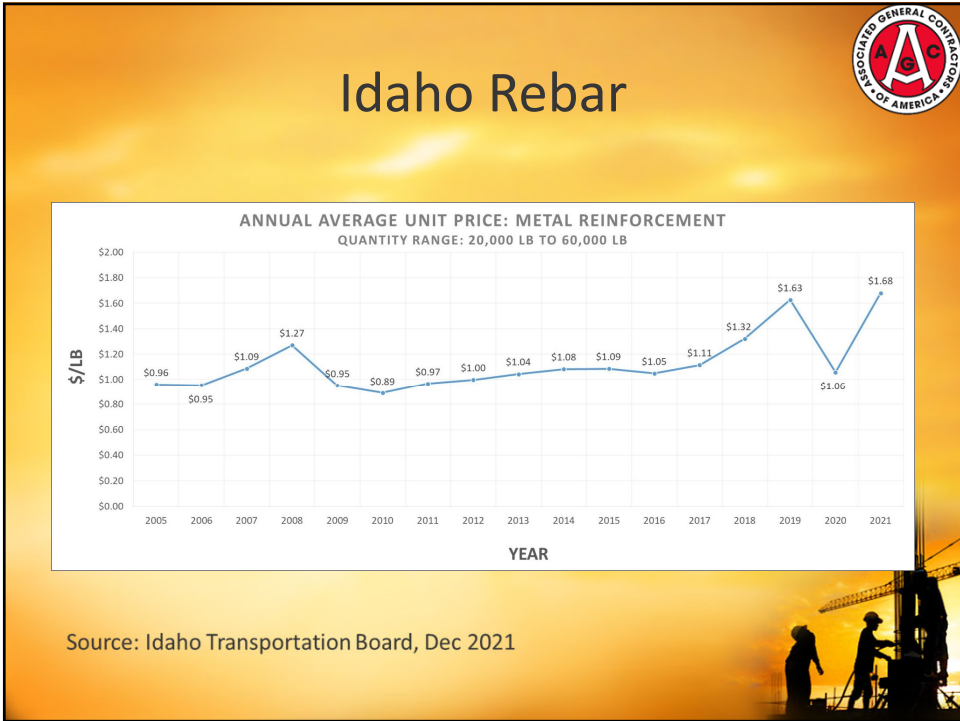
10



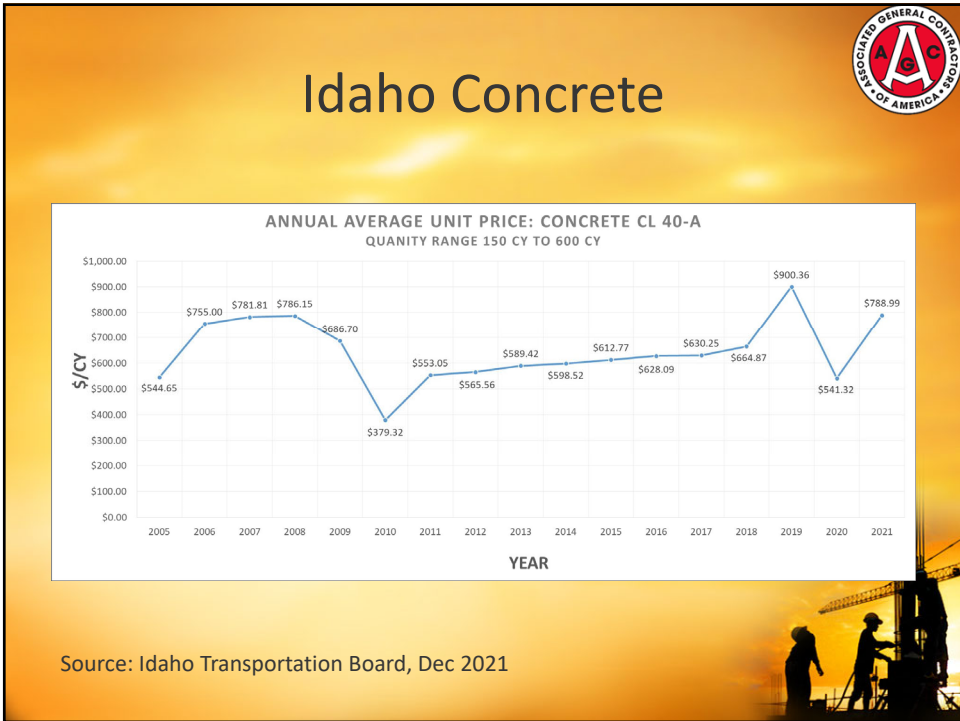
11



12




13





14


Impact & Projections





<p>Nationwide</p> <ul style="list-style-type: none"> • \$997 billion • 4.1% of national GDP • 2022: Flat to limited growth across all sectors except residential 	<p>Idaho</p> <ul style="list-style-type: none"> • \$5.6 billion • 6.9% of state GDP • 2022: Increase in all sectors except public funded structures
--	---


Residential



Retail



Manufacturing


Office


Transportation


Public Works


Utilities




15

When Will it End?




<ul style="list-style-type: none"> • Construction a cyclical industry • All industry sectors are interconnected <ul style="list-style-type: none"> – Will home prices continue to raise? • Changing interest rates 	<ul style="list-style-type: none"> • Idaho's population continues to surge • Exciting ITD expansion projects starting in 2022 • Massive investment in new construction at INL • Serval impressive projects in downtown Boise announced
---	--





16



**Do you have
any questions?**

Wayne L. Hammon, CEO
Idaho Associated General Contractors

whammon@idahoagc.org
www.idahoagc.org
208-850-3809

